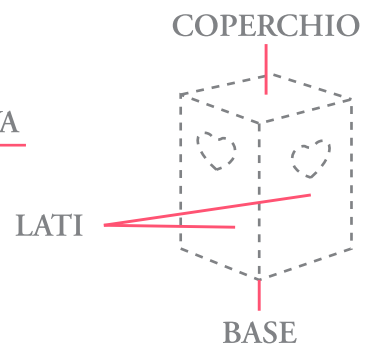
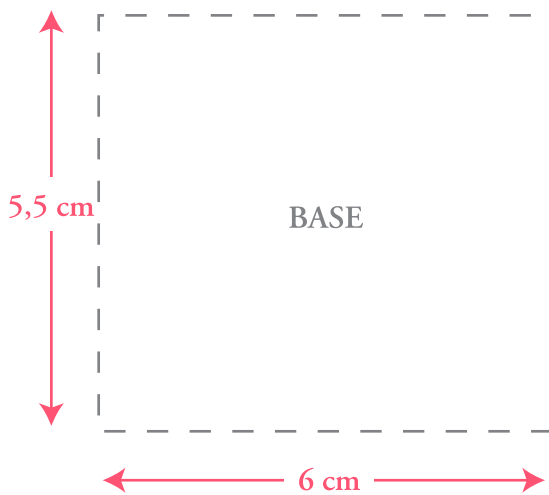
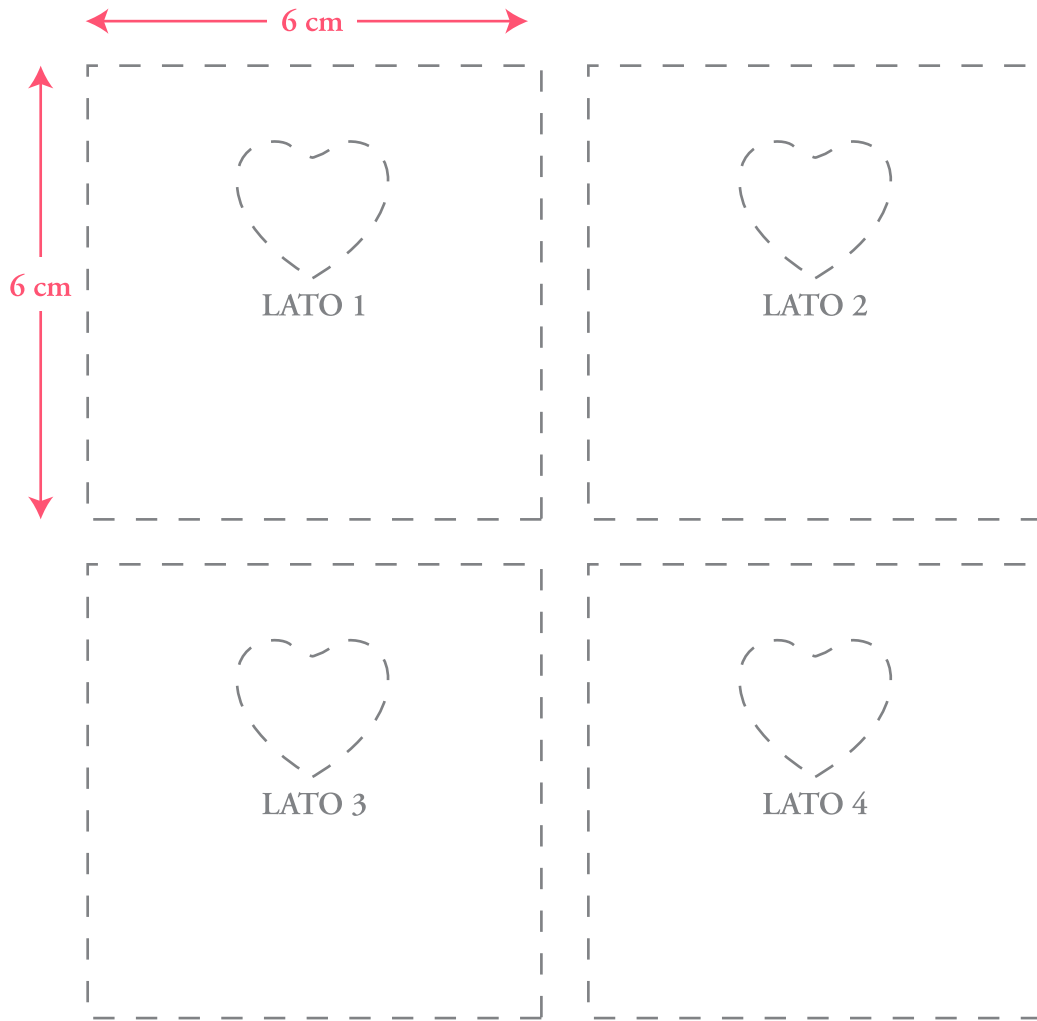


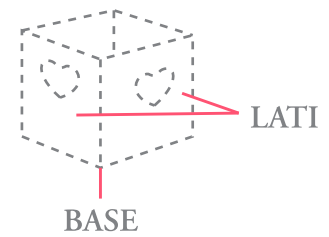
COME
ASSEMBLARE
LA LOCOMOTIVA



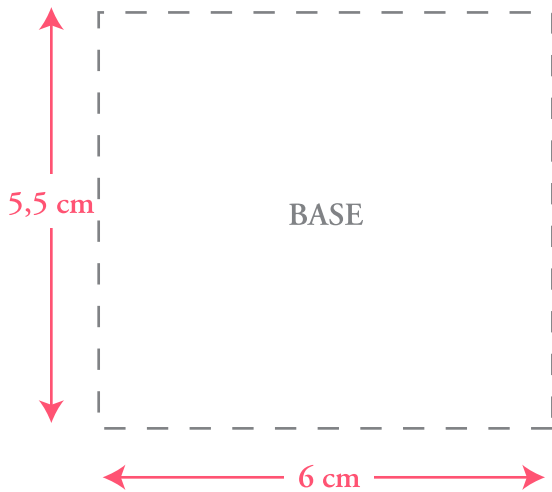
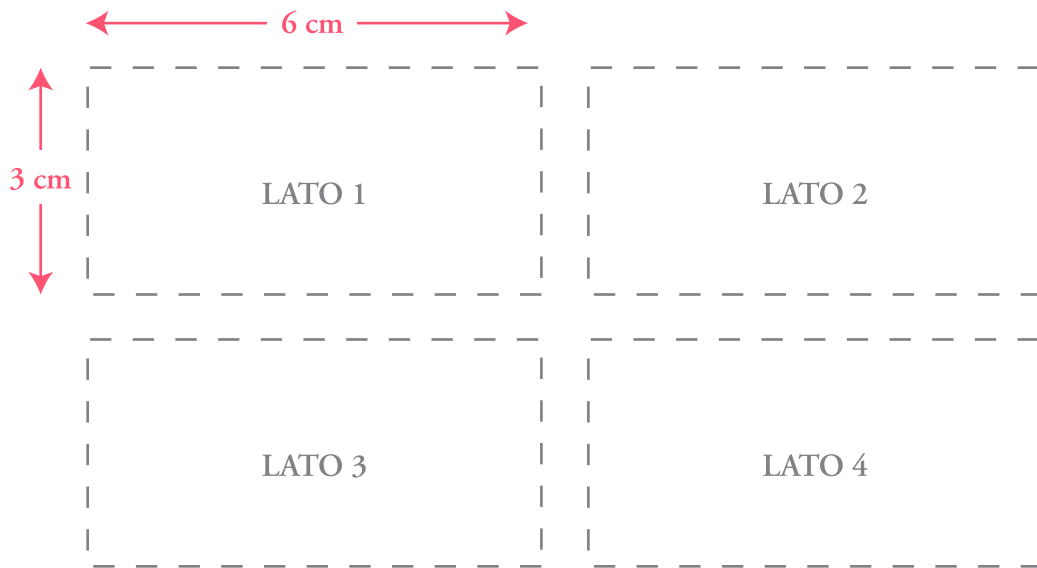
Stampa il modello e ritaglia lungo la linea tratteggiata, per creare la locomotiva.



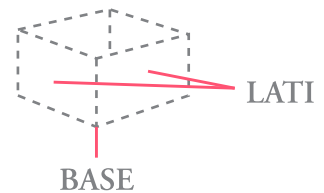
COME
ASSEMBLARE
IL PRIMO
VAGONE



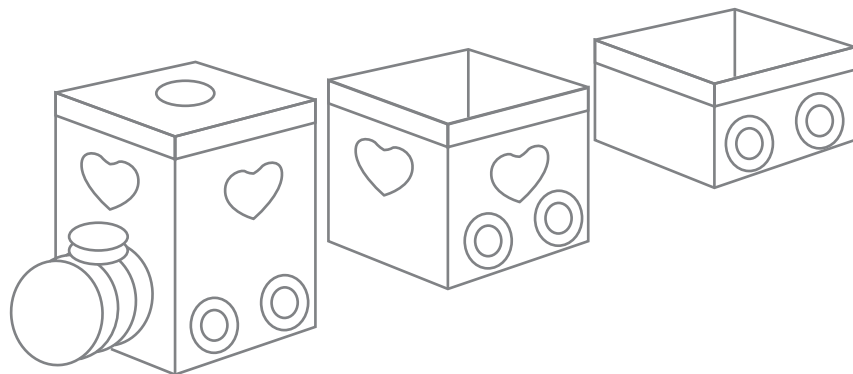
Stampa il modello e ritaglia lungo la linea tratteggiata, per creare il primo vagone.



COME
ASSEMBLARE
IL SECONDO
VAGONE



COMPLETA IL
TUO TRENINO
CON RUOTE E
DECORAZIONI
DI FROLLA!



Stampa il modello e ritaglia lungo la linea tratteggiata, per creare il secondo vagone.